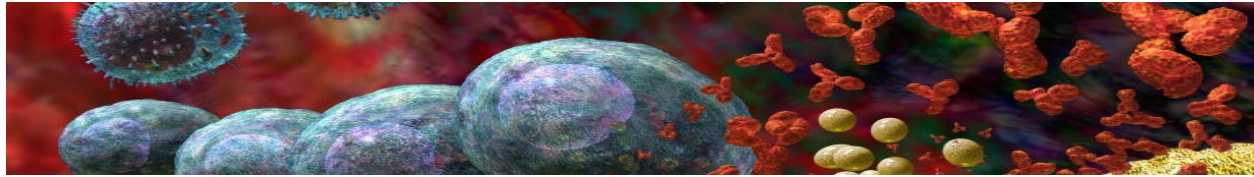




International Immunology Corporation
25549 Adams Avenue
Murrieta, CA 92562
USA
www.iicsera.com

Toll Free) 800-843-2853
Office) 951-677-5629
Fax) 951-677-6752
iic.sales@iicsera.com



Product Sheet

Bulk Antisera to Human Immunoglobulins

- Description:** Goat Antiserum to Human IgA (a Chain Specific)
- Physical Form:** Liquid **Clonality:** Polyclonal
- Immunogen:** Purified Human IgA **Host:** Goat
- Preservative:** 0.09% Sodium Azide **Sterility:** .2 micron filtered
- Specificity:** Monospecificity is confirmed by immunoelectrophoresis when tested against pooled human plasma and 2x concentrated pooled human serum.
- Titer:** For each lot of antisera produced by IIC, titer is evaluated by the method of Becker (Immunochemistry, 6:539-546, 1969) using single radial immunodiffusion. Where appropriate, antibody titers are reported as ELISA dilution.
- Process:** Defibrinated, delipidized, and adsorbed by solid phase chromatography as required.
- Storage:** For short term storage, + 2°C to + 8°C is recommended. For longer periods of storage, it is recommended that antisera be stored in appropriate aliquots below -20°C. Avoid multiple freeze thaws. Dilution prior to freezing is not recommended.
- Associated Applications:** Turbidimetric Immunoassay (TIA), TORCH (Toxoplasma Gondii, Rubella Virus, Cytomegalovirus, & Herpes Simplex Virus type 1 and 2) Panel Assay, GullSorb Assay, Immunofixation Immunoelectrophoresis, Radial Immuno-Diffusion (RID)
- Diagnostic Relevance:** Increased levels of IgA antibody could indicate chronic liver disease, chronic infection, inflammatory bowel disease, neoplasia of GI tract, autoimmune disease, Wiskott-Aldrich Syndrome, and/or IgA myeloma. Decreased levels of IgA antibody could indicate acquired immunodeficiency, heredity deficiencies (class or sub-class), ataxia telangiectasia, protein losing syndromes, Infancy, Non-IgA myeloma, and/or Waldenstrom's Macroglobulinemia.
- Dilutions:** Optimal dilutions for this product vary according to the specific applications and should be determined by the end user.
- Disclaimer:** Optimal applications, diagnostic relevance, performance criteria, and dilutions or concentrations should be determined by the end user before purchase. All IIC products are for further manufacture only and are not designed for use directly as diagnostic or therapeutic reagents. IIC products are not for animal or human consumption. IIC products are made in the USA.
- IIC Catalog Numbers:** **101G - Standard Bulk Antisera to Human IgA (a Chain Specific)**
101G-G – Gamma Fractionated Bulk Antisera to Human IgA (a chain Specific)
101G-AP – Affinity Purified Antibodies to Human IgA (a Chain Specific)

Data sources: IIC representative certificate of analysis and table of Human Blood Plasma Proteins (www.irvingcrowley.com/cls/proteins.htm - 12/28/2005)